

BAYLOR BLACK SEA FOUNDATION

2015 ANNUAL REPORT



WHO WE ARE

Our Vision

To live in a stigma free community, able to stop transmission of serious illnesses, such as HIV, hepatitis, tuberculosis, and sexually transmitted infections (STIs).

Our Mission

To help the community develop efficient services for the prevention and care of infectious diseases.

The Foundation's purpose is to create a healthier community, where infectious diseases such as HIV, hepatitis, tuberculosis (TB) and sexually transmitted infections can be stopped or prevented. In this respect, the Foundation will work with the community in order to optimize prevention, care, treatment and control over the transmission of these infections.

Our main objectives are the following:

- Prevention of infectious diseases (HIV, hepatitis B and C, tuberculosis and STIs)
- Testing and screening services for HIV, hepatitis B and C, TB and STIs
- Direct treatment for conditions related to the above diagnosis in Baylor medical offices (TB office, OB/GYN office, dental office)
- Ensuring access to other government sustained treatments for infectious diseases through public-private partnerships or private-private partnerships
- Operational research for improving the quality of services provided by the Centre of Excellence

MEMBER OF A GLOBAL FAMILY



Baylor Black Sea Foundation is part of Baylor International Pediatric AIDS Initiative (BIPAI) at Texas Children's Hospital in Houston, Texas.

The mission of **BIPAI** is to provide high-quality, high-impact, highly ethical pediatric and family-centered health care, health professional training and clinical research, focused in HIV/AIDS, tuberculosis, malaria, malnutrition and other conditions impacting the health and well-being of children and families worldwide.

Find out more at www.bipai.org

BIPAI AROUND THE WORLD



BIPAI

WHERE WE WORK

BIPAI operates in 14 countries, providing pediatric medical care, professional education for medical professionals and research into pediatric health. Here we list the primary health conditions focused upon in each country.

- | | | | | |
|--|---|--|---|--|
| 1. Angola
Primary Focus:
Sickle Cell | 4. Ethiopia
Primary Focus:
Quality Improvement | 7. Malawi
Primary Focus:
HIV, Malaria, Malnutrition,
OB/GYN, PHO, TB | 10. Romania
Primary Focus:
Dentistry, Hepatitis, OB/GYN,
HIV, TB | 13. Uganda
Primary Focus:
HIV, Malaria, OB/GYN, TB |
| 2. Botswana
Primary Focus:
HIV, PHO, TB | 5. Lesotho
Primary Focus:
HIV, TB | 8. Morocco
Primary Focus:
Training in Pediatric
Subspecialty Care | 11. Swaziland
Primary Focus:
HIV, OB/GYN, Palliative Care, TB | 14. United States
Texas Children's Hospital
Primary Focus:
Headquarters Office
Treats HIV, Trains in
Public Health,
Pediatrics |
| 3. Colombia
Primary Focus:
Pediatrics, Malnutrition,
OB/GYN | 6. Liberia
Primary Focus:
Medical Education in
Pediatrics and OB/GYN | 9. Papua New Guinea
Primary Focus:
Medical Education in Pediatrics,
OB/GYN, Public Health | 12. Tanzania
Primary Focus:
HIV, Malaria, Malnutrition,
Palliative Care, PHO, TB | |

* PHO: Pediatric Hematology/Oncology

DEDICATED TO EXCELLENCE

The Centre of Excellence or the Romanian-American Children's Centre was opened on April 6th, 2001, and the Baylor Black Sea Foundation was established in 2004.

The Centre of Excellence was founded by Dr. Mark Kline, who wished to help the children infected with HIV that he met during his first visit to Romania. The Centre became the largest pediatric clinic in Europe for treating HIV, offering services such as an outpatient clinic, a short-term treatment and observation unit, a laboratory, a pharmacy and a conference room.

In 2007, the Centre was renamed The Baylor College of Medicine Texas Children's Hospital Abbott Fund Constanța Infectious Diseases Hospital Center of Excellence – Constanța, or BIPAI Romania, in order to reflect our expanded services and partnerships.

The Centre in Romania is the most mature one in the Baylor network, as it was the first to open and treats the oldest patients. Therefore, BIPAI Romania continues to focus its care for patients as they transition from adolescence to adulthood.

The operational funds for the Centre of Excellence in Constanța were initially provided by the Abbott Fund and the Sisters of Charity of the Incarnate Word and they are currently supplied by the AbbVie Foundation in the USA.

At the moment, BIPAI Romania operates a Centre of Excellence in Constanța, three rapid testing and counseling offices in the Dobrogea area (the first ones in the country), a mobile lab for testing and a housing complex for vulnerable youth. BIPAI Romania works to minimize the impact of infectious diseases such as HIV/AIDS, hepatitis, tuberculosis and sexually transmitted diseases.

Find out more at www.excelenta-hiv.ro/en

WORKING FOR A HEALTHIER COMMUNITY



MESSAGE FROM THE BOARD

Dear Friends,

I would like to dedicate the 2016 Baylor Black Sea Foundation annual report to a friend, colleague and visionary leader: Dr. Mark W. Kline. Twenty years ago, Dr. Mark Kline made his first trip to Romania to see first-hand the pediatric AIDS crisis in Constanta. What he saw were hundreds of abandoned children crammed into bitterly cold orphanages and hospitals, gravely ill and dying of HIV/AIDS, without access to life-saving antiretroviral drugs. This contrasted sharply with his patients back home at Texas Children's Hospital. Thus began Dr. Kline's quest to not only improve the lives of HIV-infected children in Romania but transform pediatric HIV/AIDS care and treatment globally. From 1996-2001, Dr. Kline and his team from the Baylor College of Medicine International Pediatric AIDS Initiative (BIPAI) and Texas Children's Hospital made countless trips to Constanta to train



local doctors and nurses and establish the protocols that saved countless young lives.

The creation of the Romania Children's Center of Excellence and Flower House became a reality.

Twenty years later, Dr. Kline remains a visionary leader in global health as President of BIPAI; Chairman of the Board of Directors, Baylor Black Sea Foundation; Physician-in-Chief, Texas Children's Hospital; and Chairman of the Department of Pediatrics, Baylor College of Medicine. What began as an individual quest to improve the lives of HIV-infected children in Constanta has grown into a global program with BIPAI Children's Centers of Excellence in seven countries providing life-saving care and treatment to over 260,000 HIV-infected children and their families. The Power of One, Dr. Mark Kline.

Michael B. Mizwa

Vice Chairman
Board of Directors
Baylor Black Sea Foundation

Chief Operating Officer/Senior Vice President
Baylor College of Medicine International Pediatric AIDS Initiative

Director, Global Health
Texas Children's Hospital

HIV

HEPATITIS

MEDICAL DONATIONS

7

LEADERSHIP WITH A HEART

We take this opportunity to honor a longstanding partner and friend of BIPAI: Mr. Jeff Richardson. Baylor Romania would not be what it is today without the key involvement of Mr. Richardson, who is retiring after a long career of advocacy for HIV-positive individuals.

Over the past 15 years in his leadership role at the Abbott Fund and AbbVie Foundation, Mr. Richardson was key in the establishment of the Romanian Centre of Excellence, the opening of Flower House, and later, the independent living apartments for vulnerable HIV youth, as well as the many patient services for patients with HIV and hepatitis in Romania. A true testament to his life-changing work: Many of the programs he supported have been embraced by other donors or replicated by others, resulting in significant expansion of those programs. For example, the first BIPAI clinic was opened with Abbott's and Abbott Fund's support in Romania in April 2001 with 600+ patients. Today, the Baylor network serves more than 270,000 children and young people living with HIV/AIDS and other life-threatening health conditions in 14 countries.



"Jeff Richardson has been a true friend and partner, from BIPAI's humble beginnings all the way up until today. He has helped to make us better in every way. Jeff will forever be a beloved member of our BIPAI family."

Mark W. Kline, M.D., Founder, Baylor College of Medicine International Pediatric AIDS Initiative (BIPAI), Physician-in-Chief, Texas Children's Hospital, J.S. Abercrombie Professor and Chairman, Ralph D. Feigin Chair, Department of Pediatrics, Baylor College of Medicine

"When I think about Jeff Richardson my heart melts. I am not even sure he is aware of the magnitude of change he has brought into the lives of hundreds of children and families in Romania and how he shaped the attitudes of the team members at our clinic. Every time he visited Constanta, his first interest was to meet with patients, to see firsthand what their experiences and needs were. He never put reports and numbers above the individual patient and his story. This focus on serving real people and responding to real needs is what he has given us most. I have always admired that he empowered our team to design comprehensive community programs and believed that change in healthcare requires persistence and sustainability. This is what we are still striving for, 15 years later: to help our community one person at a time. Upon Jeff's upcoming retirement, we want to thank him for being a leader with a heart and a friend of all our patients.

Ana-Maria Schweitzer, Executive Director, Baylor Romania

"A partner is defined as "A person who takes part in an undertaking with another or others." Jeff Richardson has been the epitome of a true partner. He is an exemplary child advocate and the Baylor Romania Center of Excellence and Flower House are only small tokens of his legacy."

Mike Mizwa, Chief Operating Officer/Senior Vice President, Baylor College of Medicine International Pediatric AIDS Initiative (BIPAI)



A tribute to Mr. Jeff Richardson

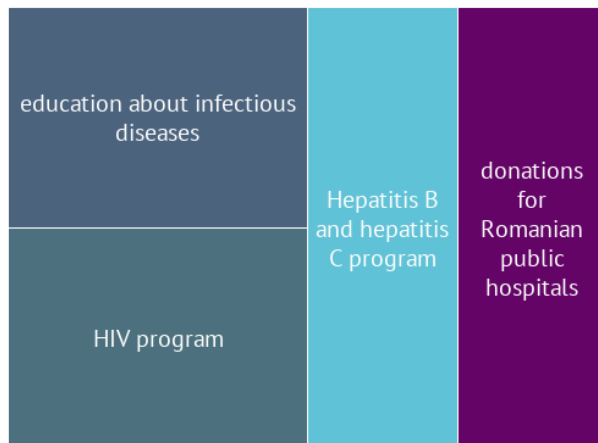
SERVICES WE DELIVER

Focus on Infectious Diseases



★ Comprehensive approach ★

driven by evidence and best practices



- * Free of charge rapid testing for infectious diseases
- * Linkages with care and treatment systems
- * Medical services (obstetrics and gynecology, dentistry, tuberculosis prophylaxis, family planning, cardio-vascular screening, HIV prevention of mother to child transmission)
- * Health literacy and self-management programs for patients with chronic illnesses
- * Mental health and adherence to treatment support
- * Trainings for healthcare professionals and associated specialists
- * Community education
- * Strengthening the health system through medical donations

PATIENTS WE SERVE

986 HIV active patients



★ **86% on treatment** ★

at Baylor Clinical Centre of Excellence



● male: 52% ● female: 42%

Age distribution



★ **53% are young people (aged 25-29)** ★

at Baylor Clinical Centre of Excellence



60% of all new HIV cases diagnosed in 2015 in Dobrogea were identified by Baylor

WHAT WE HAVE CHANGED

Rapid engagement

★★★★★

★ Active identification of health risks ★

linkages with care

41 % of evaluated women referred for further cervical cancer investigations

85 % of partners exposed to HIV who accepted testing

95 % of persons with HIV reactive results linked with care

Healthier patients

★★★★★

★ Preventing disease, restoring health ★

focus beyond HIV care

127 patients actively protected against tuberculosis

168 patients with oral health restored

204 women in control of their reproductive options

680 patients take their treatment as prescribed

BUILDING SKILLS TO ALLOW HIV PATIENTS TO STAY PHYSICALLY AND MENTALLY HEALTHY



"My HIV diagnosis shook up my life. I wanted to become a nurse, but this new condition was a huge obstacle for me. I became depressed and lost myself for a while... the team from Baylor never let me down; they insisted to talk with me, to help me come back and to focus on my treatment.... I have even spent a short time at Flower House, where I could compose myself and think about my alternatives. Today, I am back on my feet...."

(Gabriela, 26 years old, diagnosed with HIV in 2015, at Baylor Voluntary and Counselling Centre)

79% of HIV patients remained in care from the previous year

MODEL PROGRAM

A comparative study enrolled 315 HIV positive mothers and 358 children born by HIV-infected mothers between 2006 and 2012; the groups were followed up in two main regional centers (Constanta and Bucharest). Mother to child transmission was significantly lower in Constanta compared with Bucharest (6.2% versus 16.8%) and significantly more women benefited from planned C-section in Constanta (77% versus 46%).

The “Precious Children” program unfolded by the Baylor Black Sea Foundation has directly contributed to the overall results observed in Constanta. The program focuses on offering HIV pregnant women integrated access to medical and psychosocial services, in order to follow through the complete prevention process.

Tudor AM, Mărdărescu M, Petre C, Neagu Drăghicenoiu R, Ungurianu R, Tilișcan C, Oțelea D, Cambrea SC, Tănase DE, Schweitzer AM, Ruță S. Birth outcome in HIV vertically-exposed children in two Romanian centers. *GERMS* 2015;5(4):116-124.



CREATING SUPPORT FOR PATIENTS LIVING WITH HEPATITIS



7207 testing encounters in 2015

FROM TESTING TO TREATMENT

Since 2007, Baylor has created a unique HIV, hepatitis B and hepatitis C voluntary counselling and testing screening program.

Building on the experience of assisting patients with HIV, the foundation has developed support services for patients and families affected by hepatitis. The program has a strong focus on building self-management skills and increasing self-efficacy.

At the end of 2015, more than 300 patients with hepatitis were enrolled in this program. It empowers patients and families through group education and information sessions with specialists and peers.

Engaged patients

★★★★★

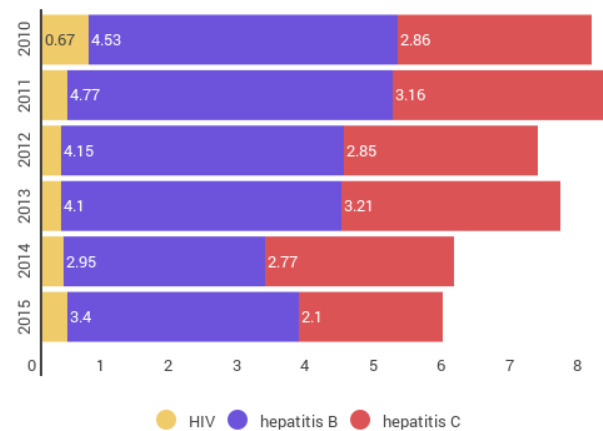
★ **Psychosocial support** ★

for patients with hepatitis

84% of patients with hepatitis helped to overcome mental health issues (depression)	80% of patients became more confident in their ability to manage hepatitis
67% of patients significantly increased their knowledge about living with hepatitis	

FINDINGS OF THE SCREENING PROGRAM

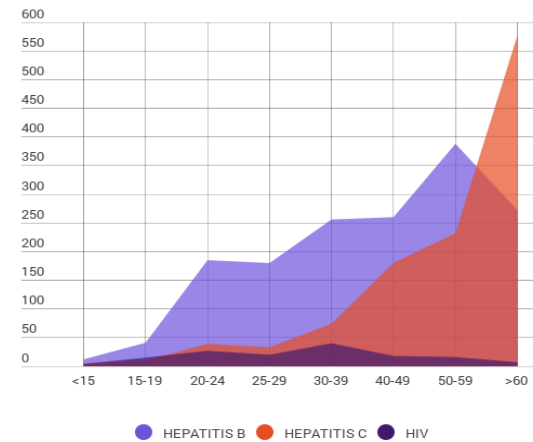
Prevalence of HIV, hepatitis B & C identified through the testing program (n= 50.069 tests)



” People in our community are interested to know their status: 77% of those tested were self-referred.

Ana-Maria Schweitzer, executive director

Age distribution of new cases detected in Dobrogea region (2010-2015)



” 78% of those seeking testing have identified in their history medium or high risk exposure situations.

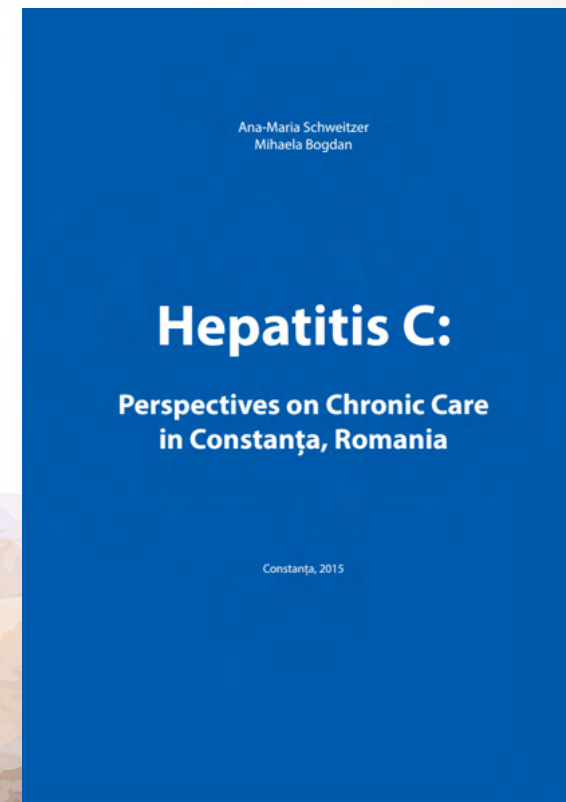
Mihaela Bogdan, testing program director

Clinic visit level maintained at 95,8%

A QUALITATIVE EVALUATION

Baylor Foundation initiated and carried out a qualitative study regarding hepatitis C, entitled "Hepatitis C: Perspectives on Chronic Care in Constanta, Romania". The assessment looked into the current level of development of the healthcare system components available to patients suffering from chronic hepatitis C in a region of Romania, Constanta County, in view of the fact that the public healthcare system's activity is supplemented by the foundation's programs and the services Baylor provides.

The results of the study indicate that the system does have a certain capacity on a local level, especially regarding the organization of healthcare services and the ways they are provided, but there is an urgent need to develop services aimed more at chronic patients. The problems are mostly the fragmentation of medical care between different institutions, the absence of work procedures which require making decisions in agreement with the patient and of work systems based on planned visits.



BEYOND THE MEDICATION

"We truly need counselling in order to help the patient understand what is going to happen to him, to make him aware of the risks." (public health specialist)

"Most of the time, wherever you look in the healthcare system, patients don't know what to do, and their lack of knowledge turns into aggression towards the medical personnel." (physician)

We need a sustainable national program for hepatitis C screening; because at the moment we are only identifying new cases by accident and it is a great shame to die because of hepatitis today...". (hepatitis C specialist)



Increased coverage for testing services in catchement area by 1%

SHARING KNOWLEDGE



OUR AIM: A MORE INFORMED COMMUNITY

During 2015 our educational initiative covered a broad range of target groups. Among the achievements of informing the community and the professionals were:

- * 2383 children and 31 puppet shows, as part of the project "The Adventures of Brulee Firefighter", a volunteer driven project for kindergarten kids;
- * 602 healthcare professionals trained about infectious diseases in 60 sessions (1 session = 1 hour)
- * 113 community members sensitized about prevention of HIV
- * over 8000 community members informed about prevention of hepatitis

"I did not realise how easy I can get infected! I was not aware that I may become infected with hepatitis just through a simple prick with a common object such as nail scissors used by another infected person" (Robert, age 24)

"What can I say about the puppet theatre project? I am so happy to have been part of an initiative that had the script written by volunteers and made the message about the infectious diseases understandable by young children. Their laughter, their enthusiasm in helping the firefighter in his battle against the disease spreading dragon were simply unforgettable". (Paul, volunteer)

World Hepatitis Day, World AIDS Day, European Testing Week were only some of the community events organized by Baylor during 2015

RESPONDING TO NEEDS

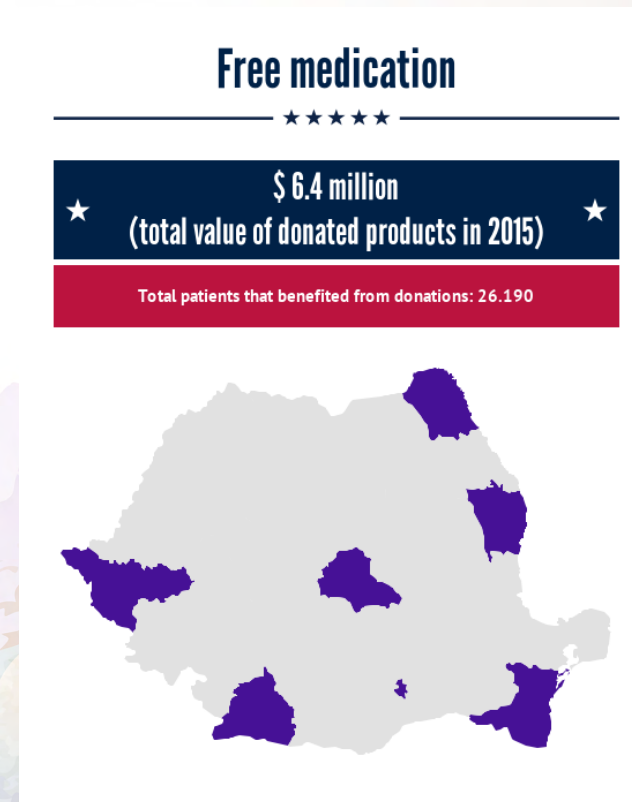


DONATIONS WORTH MILLIONS OF DOLLARS FOR ROMANIAN HOSPITALS

At present, hospitals in Romania suffer because of underfunding problems, shortages of medicines as well as because of a growing number of newly diagnosed patients.

The aim of the donations program is to contribute to a healthier community and the Chronic and Infectious Disease Management Initiative is an attempt to respond to the health care needs of local communities, improve access to medicines and close the resource gap.

During the past ten years, one of the oldest partners of Baylor Romania, AmeriCares Foundation with headquarter in Connecticut USA, has supported the organization's health programs with donations reaching a total value over \$60 million.



Donations consisted in antiretrovirals, antibiotics, cardiovascular drugs and hemophilia medication

CONSOLIDATED FINANCES

INCOME	\$
Gross Income	7,137,118
Expenses	7,117,730
Surplus	19,388

BALANCE SHEET	\$
Non-Current assets	85,660
Current assets	661,054
Total	746,714

All amounts have been calculated in dollars using the exchange rate posted by BNR on 31.12.2015.

2015 Finances Breakdown



 34,383

Patients reached through direct services.

 8,000

Community members reached through sensitization campaigns.

OUR PARTNERS AND DONORS



DP WORLD
Constanta



Our work has been enabled by community investments made by our sponsors and donors





These are the days of our lives



**Baylor Black Sea
Foundation**

Those who strive can be helped