

BAYLOR COLLEGE OF MEDICINE

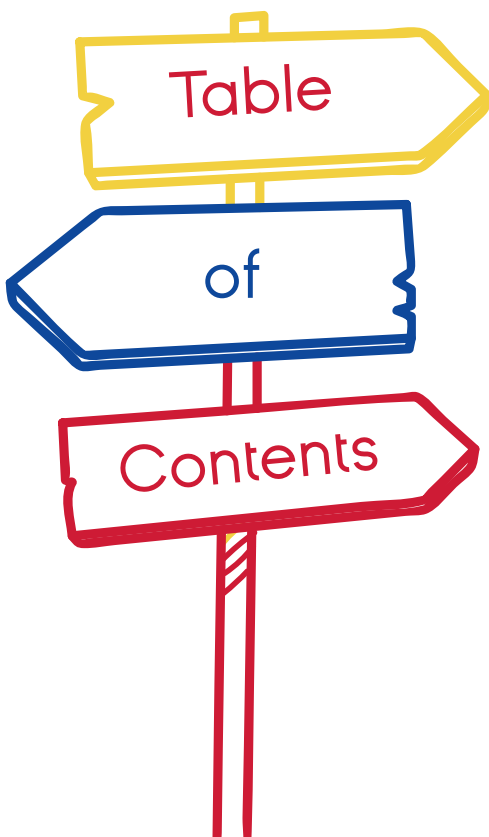
CHILDREN'S FOUNDATION

COLOMBIA 2019



BAYLOR
COLLEGE OF
MEDICINE
**Children's
Foundation**
COLOMBIA

4	BIPAI
6	Executive Director's Letter
8	Mission, vision and values
9	Knowing Colombia
10	Baylor Colombia
13	Highlights 2019
16	Lines of action
20	Programs by line of action
38	Testimonies
39	Donations and other support



BAYLOR COLLEGE OF MEDICINE

CHILDREN'S FOUNDATION

COLOMBIA

2019



Publication

April 2020

Prepared By:

Ana María Galvis

Executive Director,
Baylor-Colombia

James Thomas

Scientific Director,
Baylor-Colombia

Michael Mizwa

Senior Vice-President BIPAI

Collaborators/Consultants:

Luis Segundo Zamora

Gynecologist,
Baylor-Colombia

Yurany Herrera

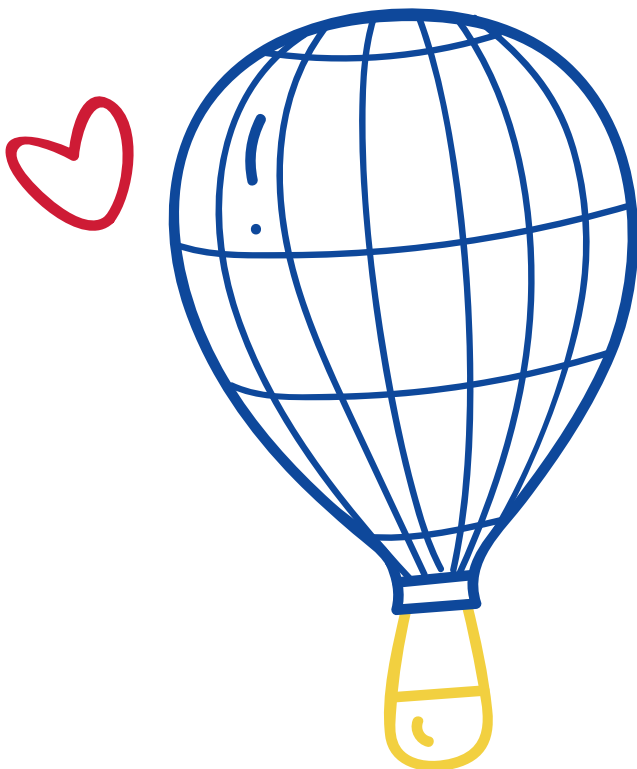
Pediatrician,
Baylor-Colombia

Eliana Villera

On Site Coordinator,
Baylor-Colombia

Photography is generously provided

by Smiley N. Pool



BAYLOR COLLEGE OF MEDICINE

CHILDREN'S FOUNDATION

COLOMBIA

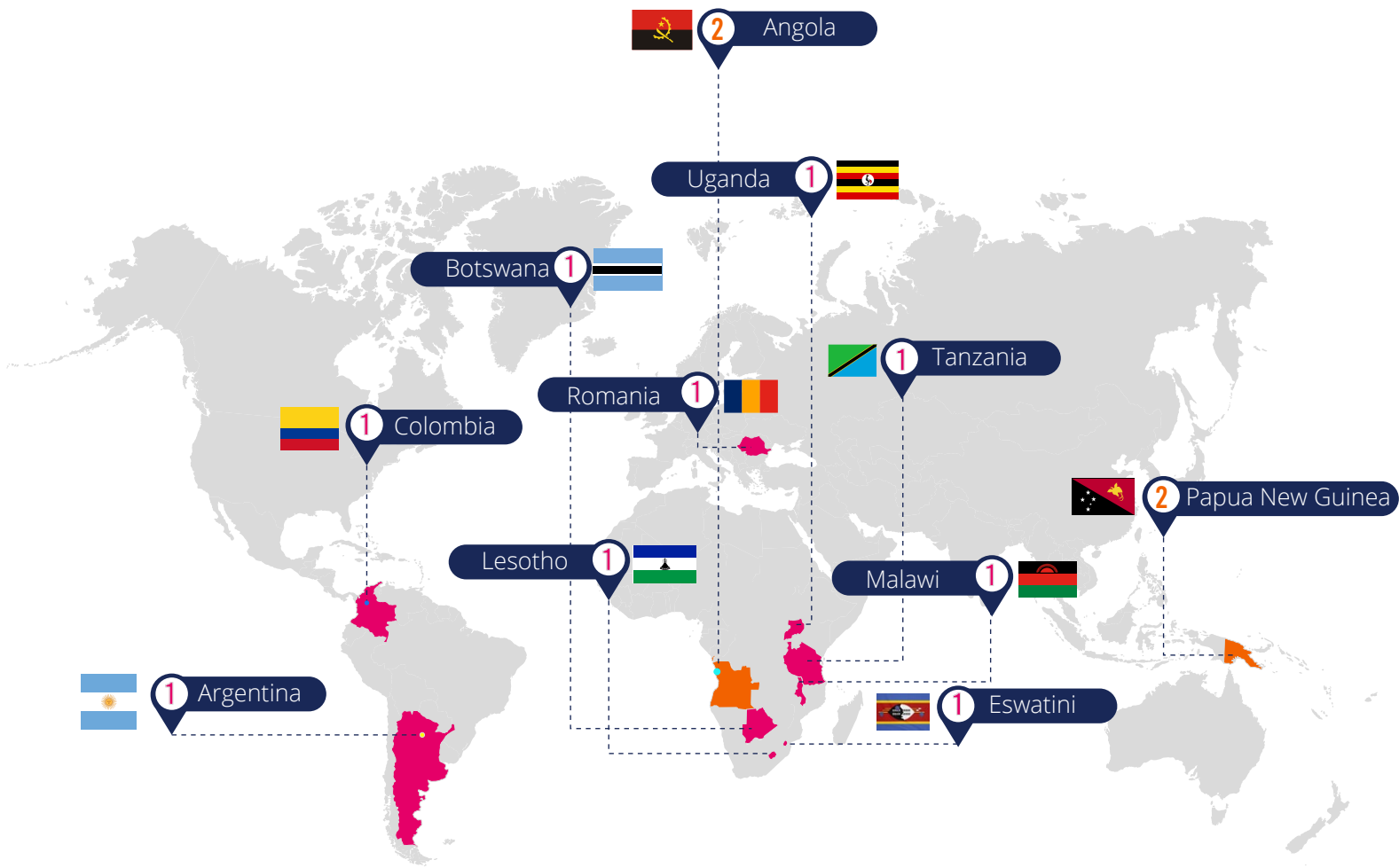
2019

BIPAI






HISTORY AND SCOPE

Baylor College of Medicine International Pediatric AIDS Initiative (BIPAI) at Texas Children's Hospital is the largest care and treatment network based at an academic institution supporting programs for HIV-infected and -affected children in the world. BIPAI consists of nine independent non-governmental organizations (NGOs) operating 11 Centers of Excellence that provide comprehensive outpatient care for more than 300,000 children and families worldwide. Over the past 20 years, BIPAI has also evolved its mission beyond HIV to include comprehensive health programs designed to work within the existing health systems and improve maternal and child health outcomes. BIPAI provides technical assistance to its network to ensure the highest level of quality care and treatment, education and training for health professionals, and operational research to improve patient care.





STATISTICS

	\$43	→ Million budget
	80.000	→ Health professionals trained around the world
	300.000	→ Patients in care
	1500+	→ Staff Members
	200	→ Texas Children's Global Health Corps physicians

1 → **Foundations:**
 Romania (2001)
 Botswana (2003)
 Lesotho (2005)
 Eswatini (2006)
 Malawi (2006)
 Uganda (2008)
 Tanzania (2011)
 Colombia (2014)
 Argentina (2017)

2 → **Programs:**
 Angola (2011)
 Papua New Guinea (2013)

*Foundations are independent and legally registered non-governmental organizations located in the respective countries.

*Date refers to year of establishment



EXECUTIVE DIRECTOR'S LETTER

In our sixth year of operations with the Baylor Foundation in Colombia we have dedicated ourselves fully to our beneficiaries: the Wayuú indigenous communities of the municipality of Manaure, in the department of La Guajira.

We have made significant progress through continuous, collaborative work, oriented toward a holistic vision of the health needs of vulnerable populations, understanding the concept of health as **“a state of complete physical, mental, and social well-being, and not only the absence of conditions or diseases.”**

Four pillars guide our efforts: health care and treatment, education focused on prevention and promotion, research and development, and complementary activities. Focusing on these areas, we provide high-quality health services for entire families, penetrating into rural areas, and delivering complementary programs that engage the physical, mental, and social well-being of our populations.

We are strengthening the knowledge of local healthcare providers and enhancing their skills to help our communities respond to their own healthcare needs.

We are also identifying problems that inhibit the achievement of the Sustainable Development Goals. Baylor Colombia is helping to create public policies that resolve these issues, and we have developed activities to satisfy basic needs and improve the well-being and health of the population.

We are proud to be the only organization that provides health services in collaboration with the public health system. The Secretary of Health for the department of La Guajira has allowed us to expand our portfolio of services by becoming the Baylor Colombia IPS Foundation, a public designation that we are an authorized healthcare provider. As an IPS in 2019, we focused on expanding access to **prevention and care services of the highest quality**, reducing the burden of diseases of interest that occur in the north of the department.

During 2019, we served 1,069 general patients, 1,929 pediatric patients, 429 for malnutrition, and 999 for gynecology. We assisted 829 women in the family planning program, and 320 people were vaccinated. We also treated 104 people in dentistry, 141 in prenatal control, 687 in visual acuity, and 198 patients in the Nutritional Recovery Center.

In order to contribute to the formulation of public policies that contribute to impacting the determinants of health, we continue with the **Research and Development** axis, investigations that we hope can contribute to closing the gaps that may exist in the health management department.

We are building local capacity in the department through Education activities in partnerships with universities, such as the University of Antioquia and the Javeriana University, who seek to contribute to the strengthening of health professionals.

In addition, more than 100 families benefited through the sustainable production of 34,719 eggs, contributing to a decrease in acute chronic malnutrition by 81%, a decrease in the risk of malnutrition by 45%, and a 30% increase in the proportion of children under 5 with a healthy weight.

Finally, we implemented the Alimercambio project, which seeks to pilot a triple-impact model centered on health, economics, and the environment. **Our goals are sustainable food security and environmental recovery, through the use of recyclable materials in food production.** With this project, we signed up 1,006 people and collected nine tons of recyclable waste.

These results would not have been possible without the collaboration of our sponsors and donors, the Baylor College of Medicine Pediatrics AIDS Initiative and Texas Children's Hospital in the United States, Chevron Petroleum Company, founding partner of the Baylor Colombia, and the support of government actors such as the Vice Ministry of Health, the Colombian Society of Pediatrics, the Colombian Institute of Family Welfare, and the articulation with private allies such as Ecopetrol, Fundación Éxito, Bancalimentos and the Development Bank of Latin America CAF.

Looking to the future, we will continue working to reduce the rates of maternal and infant morbidity and mortality, and will continue contributing to the improvement of the health conditions of vulnerable populations in La Guajira and the rest of the country.



Ana María Galvis
Executive Director
Baylor Colombia



MISSION

Through our global and intercultural community, we provide family-oriented, high-quality medical care with cutting edge technology, medical ethics, health education and clinical research. We seek to impact the health and well-being of pregnant mothers, children, and their families.

VISION

Create a healthier future for all pregnant women, children, and their families in Colombia.

VALUES

Teamwork

We support each other and work together for our beneficiaries. We communicate actively and openly. We are reliable and loyal to each other and to the organization. We foster trust by fulfilling our commitments. We show respect for ourselves and others.

Care

We treat each person we serve in the same way we would like to be treated. Our goal is to be kind and patient at all times with patients, trainees, and others.

Excellence

We provide high-quality medical care, medical ethics and impact, family-oriented health education, and clinical research worldwide.

Innovation

We are creative in the application of methods and technologies to solve problems, constantly looking for ways to improve. We recognize the opportunity in each challenge; we focus on solutions instead of problems.

Transparency

We are a corruption-free foundation. As citizens, members of the private sector, and public sector operators, we actively sanction acts of corruption and combat them.

Diversity

We value and promote acceptance and respect for each individual. We understand that each individual is unique, we recognize their differences, and foster an inclusive work environment that values the diversity of ideas and talents.

COLOMBIA



48.258.494
Population



- 51.2%** Women
- 48.8%** Men
- 22.6%** 0-14 years
- 68.2%** 15-65 years
- 9.1%** 65 years and over



Location:

The Republic of Colombia is located at the northwestern tip of South America, between 4° south latitude and 12° north latitude, and between 67° and 79° west longitude.

Manaure

Riohacha

Total Area:
1.141.748 Km2

Bogotá,
Capital City

Capital:
Bogotá D.C

Geographical Division

32 departments and **1** capital district, Bogotá

Ethnic groups:

- Afro-Colombian or Afro-descendant
- Indigenous communities
- Raizales
- Rom

Language:

The official language is **Spanish**; however, English is spoken in San Andres and Providencia. Additionally, there are **64 dialects** of native indigenous tribes.

Climate:

Colombia has a tropical climate, hot and humid.



BAYLOR COLOMBIA

Baylor-Colombia was established at the end of 2014 with the signing of cooperation letters between the hospitals of Manaure and Riohacha, with the support of Chevron, Ecopetrol, the Office of the First Lady of the Nation, the Ministry of Foreign Affairs, and the Ministry of Health and Social Protection.

Our coverage area, La Guajira, struggles with various critical health problems, among which are the high rates of infant and maternal mortality. These problems are largely the result of inadequate health systems, incomplete healthcare coverage of the most at-risk populations, and deficiencies in the education and training of children, mothers, and public health professionals.

For this reason, Baylor-Colombia has focused its efforts through the Indigenous Health and Self-Sufficiency Program, known as SAIL Salud y Autosuficiencia Indígena.

The program is designed to work in conjunction with the existing health system in La Guajira. The activities are guided by strategies aimed at providing integrated solutions, driven by the local community, and focused on the following five objectives in the areas of Manaure and Riohacha:

Access: Increase the availability and use of high-quality health services for children and pregnant women in the area of activity.

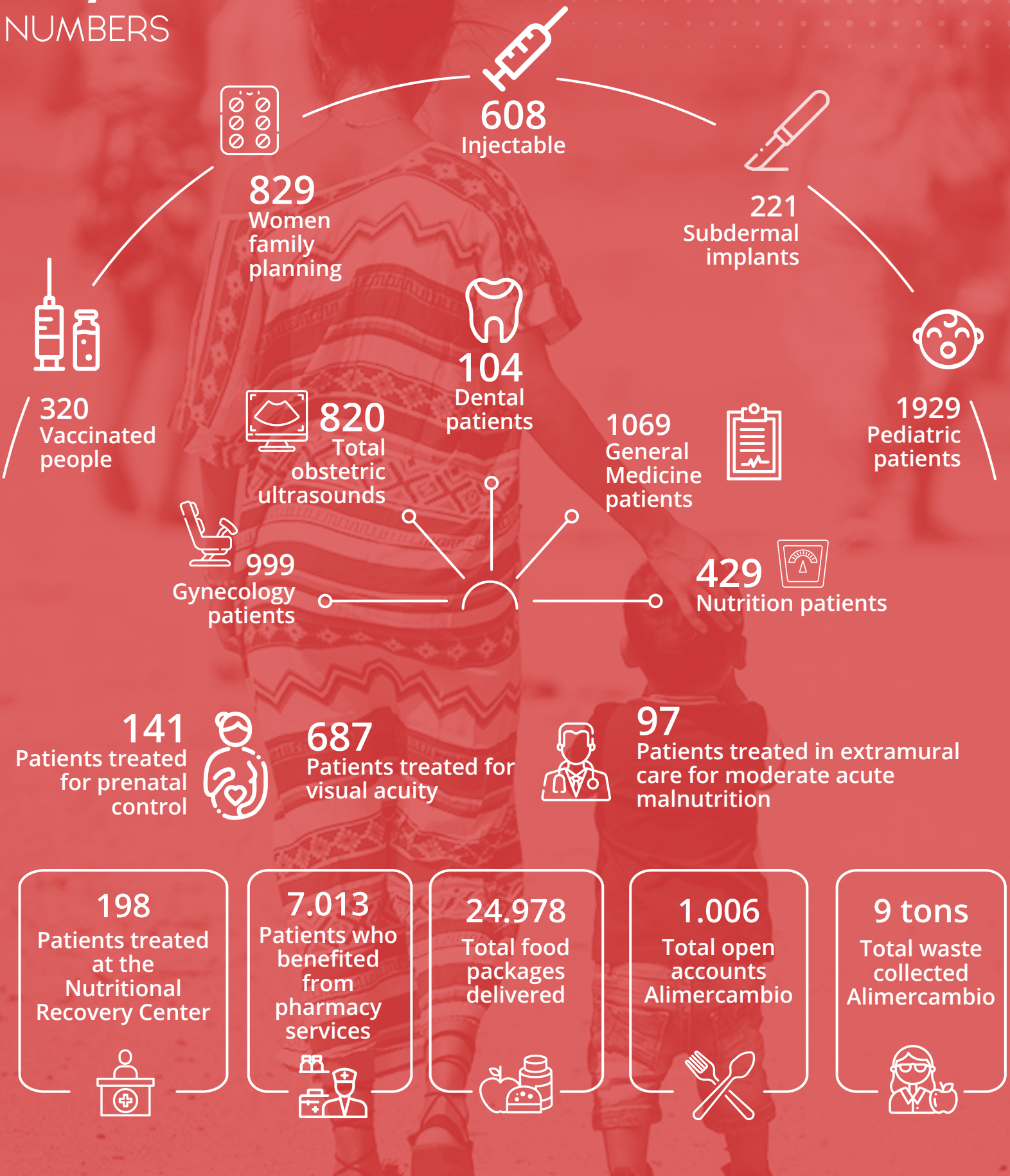
Increase capacity: Foster the potential of indigenous and non-indigenous communities and of the health system to meet and sustain their own health needs.

Surveillance: Identify the most prevalent diseases and the groups and individuals at the highest risk of contracting them.

Prevention and early intervention: Put in place mechanisms that facilitate disease prevention, early identification, care, and timely treatment.

Articulation: Carry out the proposal in an effective and transparent manner, measuring the impact of the most important interventions to deliver a proven public health pilot using a differential approach that involves all stakeholders.

KEY NUMBERS



BAYLOR COLOMBIA STAFF 2019

POSITION	QUANTITY	POSITION	QUANTITY
Executive Director	1	General Doctor	4
Account Coordinator	1	Nursing Assistant	8
On-site Coordinator	2	Nurse	1
Administrative Assistant	2	Health Promoters	5
Administrative Auxiliary	1	Nutritionist	3
Legal Advisor	1	Social Worker	4
Information Officer	1	Food Handling	4
SENA Apprentice	1	Security Guard	3
Pediatrician	1	General Services	6
		GRAND TOTAL	48

DONORS	TOTAL (COLOMBIAN PESOS)	TOTAL (USD)
Chevron – Baylor USA	1.992.880.310	607.400
ÉXITO Foundation	487.243.431	148.505
ICBF	828.208.907	252.426
Chevron – Global Health Initiative	1.029.900.000	313.898
CAF (Andean Development Corporation)	60.407.280	18.411
Sanuteam S.A.S.	21.015.000	6.405
Velez San Juan Nathalie	1.088.000	332
Gymboree	1.084.000	330
TOTAL	4.421.826.928	1.347.707

AVERAGE EXCHANGE RATE 2019: \$3.281

HIGHLIGHTS 2019

OFFICIAL OPENING OF IPS BAYLOR COLOMBIA SERVICES

On March 26, 2019, we inaugurated Baylor Colombia, which operates in the Jieyusira Community Health Center in the rural area of Manaure municipality. This is the result of the donation made by the association Ecopetrol - Chevron Petroleum Company Colombia and the work between Baylor-Colombia and the indigenous authorities associated as a COOPWACE cooperative.

At present our health services, which are implemented using a differential approach, impact about 172 indigenous communities, contributing to this group's reduction in maternal and child mortality indicators. Our program is designed to work in conjunction with the existing health system in La Guajira, and our activities are guided by strategies aimed at providing integrated solutions promoted by the local community. Since we started, 1,438 people have received care in general medicine, specific protection, and early detection services, in addition to consultations on nutrition, pediatrics and gynecology and obstetrics.

AGREEMENT WITH JAVERIANA UNIVERSITY FOR THE ROTATION OF INTERNS

On June 28, 2019, Dr. Alberto Rodríguez, Career Director of the Faculty of Medicine; Dr. Juan Carlos Zambrano, Chief of Plastic Surgery; and Dr. Magda Alba, Assistant Dean, visited Baylor Colombia and learned about each of our projects in La Guajira and their achievements in favor of the Wayúu community. As a result of this visit, Javeriana University and Baylor Colombia signed a cooperation agreement for the one-month rotation of interns in general medicine to work in La Guajira and train in the integral management of malnourished children.

ALIMERCAMBIO FOOD SECURITY PROJECT

As of July 2019, Bancalimentos together with Caminos de Identidad Foundation, Fomento Bank of Latin America CAF, Éxito, and Chevron have developed Alimercambio, a project that seeks to convert recycling into a currency for the people of Manaure to access food and other services, with the objective of improving their quality of life and generating a triple impact by supporting vulnerable populations.



PARTICIPATION IN 21ST BIPAI NETWORK MEETING

From November 18-22, the Baylor Colombia team attended the 21st BIPAI Network Meeting held in Johannesburg, South Africa, along with other BIPAI programs and foundations in Angola, Argentina, Botswana, Eswatini, Lesotho, Malawi, Romania, Tanzania, Uganda, and Houston. The meeting was to update on the progress of each foundation's programs and to demonstrate the research carried out by BIPAI Network members, taking into account the cultural dynamics in which each foundation operates.

GYMBOREE SESSIONS FOR BABY DEVELOPMENT

Babies require adequate stimulation to increase their physical, sensory, and social development. The brain is at its maximum development potential from birth to 3 years, when babies are more easily able to learn through the repetition of exercises and games, which are the best form of learning for children, taking into account developmental milestones for each age.

That is why, on September 30, 2019, Baylor Colombia, together with its strategic partner Gymboree, implemented an innovative strategy of stimulation sessions at the Baylor Colombia to help Wayúu children fully develop their capabilities.

COOPERATION AGREEMENT WITH CHEVRON COLOMBIA “EVOLUTION OF SAIL TOWARDS A GLOBAL HEALTH INITIATIVE”

On November 30, 2019, a cooperation agreement was signed between the Baylor Colombia and Chevron Colombia, with the aim of developing the project “Evolution of sailing towards a global health initiative” in Manaure, Riohacha and Uribia , in La Guajira.

With this project, 5 programs will be implemented during 2020. One program is aimed at the provision of prenatal control health services to achieve good maternal health, normal development of the fetus and a newborn in optimal physical, mental, and emotional conditions.

Another program focuses on registration, regularization and improvement of the scope to access health services for the population not covered by the health system.

The telemedicine program will facilitate access and improve opportunities and resolution in the provision of health services, in any of its phases of promotion, prevention, diagnosis, treatment, rehabilitation and palliation.

The “Not One More” program will strengthen the identification, recruitment and timely care of children with acute malnutrition and risk of acute malnutrition, and pregnant women with low weight, with the aim of reducing deaths associated with malnutrition.

Finally, we will implement the “My Protective Neighbor” program, which seeks to promote the integral development, care and protection of children in vulnerable conditions, through actions that promote the exercise of their rights, with the active and organized participation of the family , the community and the territory.



KNOWLEDGE EXCHANGE BETWEEN TRADITIONAL COMMUNITY MEDICINE AND WESTERN MEDICINE

From December 2-6, 2019, the Institute of Public Health at Javeriana Universidad held the second knowledge exchange between traditional community medicine and Western medicine in La Guajira. The meetings aim to close gaps in the implementation of malnutrition treatment in children under 5 and pregnant women, and to provide strategies for the improvement of maternal and perinatal health in the most vulnerable territories where there are high rates of deaths due to malnutrition. For this, the Baylor Colombia team was trained and certified as community researchers who provide viable solutions to the problems of the health sector to La Guajira.

NEW INFRASTRUCTURE AND ENDOWMENT AGREEMENT FOR THE NUTRITIONAL RECOVERY CENTER.

On December 11, Baylor Colombia Executive Director Ana María Galvis, On-Site Coordinator Eliana Villera, Dr. James Thomas and Dr. Nancy Calles of Texas Children's Hospital signed a cooperation agreement with the Mayor of Manaure to the delivery of a new infrastructure for the operation of the Nutritional Recovery Center and the Alimercambio food security project. This agreement will expand the operations of the Baylor Colombia in Manaure, La Guajira, with the aim of continuing to join forces in the fight against acute malnutrition faced by the population of La Guajira, provide comprehensive care for early childhood and support Wayúu communities with the improvement of their health conditions and quality of life.



LINES OF ACTION

WHY WE DO IT ?

We believe a holistic approach of health will support the reduction of the high infant and maternal mortality rates of the population in Colombia

WHAT DO WE DO ?

Our health model incorporates, health care delivery, education, research and complimentary actions

HOW WE DO IT?

Through programs that impact the determinants of health, we are implementing a New Holistic Indigenous Health Model. We do not only treat the pathology, but also work to resolve the underlying causes to improve the overall health of the patient.



HEALTHCARE AND TREATMENT



1. Outpatient Consultation
2. Diagnostic Support
3. Specific Protection
4. Early Detection



EDUCATION, PREVENTION, AND PROMOTION



1. Community Education
2. Health Professionals Education



RESEARCH AND DEVELOPMENT



1. Infant
2. Family
3. Pregant Women
4. New Health Model



COMPLEMENTARY ACTIVITIES



1. Food security
2. Economic development

We implement a health model that is fair, **consistent and culturally relevant.**

We promote the **inclusion of indigenous staff** who are sensitive to the health needs and understand the local customs of this culturally diverse nation.

We focus our efforts on strengthening the local capacity in health **through education for the indigenous communities and health professionals.**

We promote the **development of research initiatives** that contribute to strengthening the current gaps in the health care model and **impact the adjustment of public policy.**

We generate **holistic and self-managed social models**, to intervene health determinants, which are replicable, sustainable and **triple impact** (Health, Economic, Environmental)



BAYLOR COLOMBIA FOUNDATION PROGRAMS

HEALTH CARE AND TREATMENT	EDUCATION	DEVELOPMENT RESEARCH	COMPLEMENTARY ACTIVITIES	
OUTPATIENT CONSULTATION	COMMUNITY EDUCATION	INFANT POPULATION	TRIPLE IMPACT	
Obstetrics/Gynecology	Traditional midwifery practices	Evaluation of progress in neurodevelopment in children under 5 years in intramural nutritional recovery	Egg production project to increase food security in indigenous communities	
General Dentistry	Dialogue of knowledge about breast-feeding	FAMILY	Nutritional recovery and education projects to eliminate malnutrition	
Pediatrics	Dialogue of knowledge about family planning		The potential of the egg to improve the nutritional recovery of vulnerable indigenous communities in northern Colombia	Alimercambio recycling bank where recycled materials are exchanged for food and health services
General Medicine	Dialogue of knowledge about western medicine and traditional medicine		Handicraft production at the Nutritional Recovery Center	
Nutrition	Training of health promoters	PREGNANT WOMEN		
	Ethnoeducational training in community health AIEPI		Evaluation of the effects of anemia and malnutrition on pregnant women	
	Vaccination certificate for health promoters			



BAYLOR COLOMBIA FOUNDATION PROGRAMS

HEALTH CARE AND TREATMENT	EDUCATION	DEVELOPMENT RESEARCH	COMPLEMENTARY ACTIVITIES
DIAGNOSTIC SUPPORT	EDUCATION FOR HEALTH PROFESSIONALS	HOLISTIC HEALTH MODEL	
Cervical cancer screening	Medical students rotating in Pediatrics from the University of Antioquia	Integral model of health care for dispersed populations	
Sampling and clinical laboratory			
Obstetric ultrasound - Basic- advanced Ecography			
EARLY DETECTION	Medical students rotating from the Javeria University		
Growth disorders in children under 10 years	Professional health seminars for health institutions		
Growth disorders and development (Under 10 years)	Regional congress of the Colombian Society of Pediatrics		
Alterations in youth development (10 to 29 years)	Safe maternity program		
Pregnancy disorders	Program for the management of moderate acute malnutrition in children of 0 to 59 months		
Visual Health Screening	Open weekly medical seminars		
SPECIALIZED INTERVENTIONS			
Family planning for men and women			
Extramural attention in malnutrition			
Intramural attention in malnutrition in the Nutritional Recovery Center of Manure			
TOTAL P: 16	TOTAL P: 14	TOTAL P: 4	TOTAL P: 4
TOTAL PROGRAMS 38			



BAYLOR COLOMBIA FOUNDATION PROGRAMS.

TRIPLE IMPACT: HEALTH, EDUCATION, DEVELOPMENT			
2020: ADDITIONAL PROGRAMS BAYLOR COLOMBIA FOUNDATION - GUAJIRA			
HEALTH CARE AND TREATMENT	EDUCATION	DEVELOPMENT RESEARCH	COMPLEMENTARY ACTIVITIES
Telemedicine	Local Surgery Training Program Agreement Baylor - Javeriana - TCH		My family psychosocial support
First 1.000 days Program	High School intervention on microbial agents, infections and prevention		Exchange and transfer of formal, traditional and community midwives knowledge to improve maternal and perinatal health with a differential approach
Venezuela Rescue Initiative			
TOTAL P: 3	TOTAL P: 2	TOTAL P: 0	TOTAL P: 2
TOTAL ADDITIONAL PROGRAMS 2020: 7			
TOTAL PROGRAMS 2019 and 2020= 45			

1. HEALTH CARE AND TREATMENT



BASIC AND ADVANCED OBSTETRIC GYNECOLOGY AND SONOGRAPHY

On November 28, 2018, we received authorization to provide services at the health center in Jieyusirra, Manauere, in the zone known as “El Pájaro.” In 2019, they initiated obstetrics and gynecology services to reduce maternal and perinatal morbidity and mortality, and in turn improve the nutrition of indigenous women and antenatal development.

With this program, we are focusing our attention on women of childbearing age, especially in their pregnant or postpartum period, since these vulnerable women are exposed to various diseases and risk factors such as malnutrition, delayed intrauterine growth, anemias, and genetic anomalies, among other things. We evaluate pregnant women to identify pregnancy risk factors and pathologies associated with each pregnancy. We review the bio-psychosocial integrity of the patient and the condition of her breast health, get an accurate diagnosis of the gestational stage, the condition and growth of the fetus, then impart specific treatment according to the patient’s need. In addition, we offer basic and advanced ultrasounds and laboratory studies. We also provide education to the household of the mother regarding preventive care and learning to identify warning signs so they know when to seek emergency help. We also offer family planning counseling.

With the implementation of this program, 999 patients benefited in 2019, all of whom were provided medical treatment and follow-up. We also performed 820 obstetric ultrasounds.



GENERAL ODONTOLOGY

Our dentistry program, launched in 2019, seeks to reduce the most important risk factors for the appearance of caries and periodontal disease in the population over 6 months of age living in the rural areas around Manaure.

Baylor-Colombia dentists provide a combination of treatment and educational services during each visit. They inspect the amount of plaque in the mouth and teach patients how to remove it themselves daily, along with other aspects of daily oral care. We also help patients reinforce the tooth surface (enamel) to reduce the action of microorganisms, production of acids, and the formation of cavities in the tooth structure.

We have capacity to modify the surface of the tooth in areas that have pits and fissures in order to decrease the accumulation of bacterial plaque and mitigate the risk of tooth decay and damage to the gums. The services also include the application of fluoride, sealants and supra gingival retreatment.

During 2019, we saw 104 dental patients.

PEDIATRICS

The Baylor Colombia pediatrics program has been attending to children in the department of La Guajira for six years. It aims to promote the health and well-being of Wayuú children through the promotion and prevention of health problems, early diagnosis and treatment of diseases, and encouraging development and a healthy lifestyle through education.

The program also seeks to reduce the morbidity and mortality of the target population through high-quality, specialized care and a community-based approach, which is provided in the area of influence of Baylor-Colombia that operates in the Jieyusirra Health Center and in the Nutritional Recovery Center of Manaure (CRN).

To accomplish these goals, we must guarantee effective access to pediatric care, implement a primary care pediatrics model, and increase capacity to address prevalent childhood diseases through external consultations and the technical support and pediatric assessments that are made in the CRN. To enter the CRN modality, a patient must be referred by general doctors or by health promoters, be in a condition of malnutrition or at risk, or have a chronic pathology, history of intrauterine growth restriction, low birth weight, perinatal infections, recurrent infections, Down syndrome, or childhood paralysis. Additionally, newborns can access a health assessment, as well as symptomatic children whose pathology falls outside the scope of general medicine care.

To date, we have managed a significant number of patients. In 2019, we attended 929 children, promoted healthy lifestyles, and helped mothers learn about the importance of breastfeeding. We also have helped parents detect warning signs in children, contributing to the decrease in morbidity and mortality by referring them to early consultation.





GENERAL MEDICINE

Our general medicine program works to evaluate the health status and biological risk factors of the Wayúu people in the area of Manaure, as well as psychological, social, and cultural factors, with the aim of detecting circumstances or pathologies that could affect their development and health. When patients come in for a checkup or an illness, we do a pre-consultation to assess the patient and fill out relevant documents, which is the first step in building a personal and unique medical history.

For 2019, we conducted 756 first-time consultations in general medicine and 313 recurring visits.

NUTRITION

Through this program, Baylor-Colombia provides quality nutritional care for the people of Manure and surrounding communities at the Jieyusirra Health Center. Our medical officers carry out a clinical evaluation and nutritional classification of the person to verify the presence of acute malnutrition and define the appropriate management plan under quality and safety parameters.

This program provides nutritional consultations for children, care for pregnant women, care for adults who are overweight, obese, or with chronic non-communicable diseases, and follow-up care for patients who require it. In addition the program includes a component of food and nutrition education for all patients treated, and training for IPS users at Baylor Colombia.

In 2019, 429 consultations were conducted with 143 unique patients, obtaining a greater number of diagnoses in consultation for the care and supervision of the children's health, malnutrition in pregnancy, obesity, and caloric protein malnutrition.





PARENTING, HEALTH PROMOTION, AND DISEASE PREVENTION: CHILD AND ADOLESCENT DEVELOPMENT

With the help of our partner Chevron, this program was developed to accompany parents and caregivers in strengthening their capacities for parenting, health care, and disease prevention to promote child development.

Likewise, we aim to reinforce the autonomy and identity construction of adolescents so that they can live a healthy life and make free and informed choices about sexuality, reproduction, work, political engagement, and social interactions.

As it covers every stage of childhood, adolescence, parenting, and caregiving, the program is available to the entire population of Manaure at all ages. In 2019, we reached 63 children, 51 adolescents, 167 youths, 177 adults, and 39 in old age.



HEALTH PROMOTION AND DISEASE PREVENTION: AGING AND VISUAL ACUITY CHANGES.

This program seeks to develop adults capacities to promote and maintain their own health. We want people to be able to enjoy the right to health, and we do so in part by increasing collective knowledge, including the ability to detect the early signs of visual acuity changes and blindness.

We begin performing medical examinations for visual acuity for children aged 3. This consists of a test that is used to determine the degree to which the patient sees from far or near using a vision chart. During 2019, we treated 687 patients for visual acuity problems.

PRENATAL CARE

This program provides diligent care to pregnant woman and in support of the normal development of the baby. We seek to identify those patients at greatest risk for complications and carry out interventions early to lead to better outcomes. We determine these risks by analyzing the mother's medical and reproductive history, conducting physical examinations, and performing laboratory tests and ultrasound exams.

For 2019, we took 120 lab samples for 12 patients, and 141 people were treated in prenatal follow-ups.

FAMILY PLANNING FOR MEN AND WOMEN

The Wayúu Family Planning program is implemented in the health center in the rural Jieyusirra community, seeking to raise awareness among Wayúu women and families about contraception. We are helping to increase the quality of life of the Wayúu communities by incorporating a differential approach in the use of contraception, reducing the costs of its application, and promoting gender equity.

The target population for this project includes women of childbearing age, multiparous women, and women of high obstetric risk who are provided with an integrated health service that provides for the best care and support.

For this, the program works through three strategic axes consisting of advisory consultations, acceptance of contraception and choice of a method, and follow-up. The patient is instructed on the importance of planning, the available contraceptive methods, how to access them, and their effects. We conduct a medical assessment and offer monthly injectables, quarterly injectables, and subcutaneous implants, since these are the options accepted by the Wayúu community. Once the contraceptive is chosen, the injectable or the implant is applied in the health center. Later the clients make periodic visits to apply the new dose of contraceptive, and for us to assess the women for adverse side effects.

The results of the program have been satisfactory, with 829 women served in 2019. Among them, 608 benefited from the injectable method of planning and 221 women received subdermal implants.

EXTRAMURAL FOLLOW-UPS FOR MODERATE ACUTE NUTRITION

This program seeks to reduce infant morbidity and mortality associated with acute, moderate, and severe malnutrition, as well as relapses in malnutrition, through extramural nutritional medical follow-up for children between 0 and 59 months of age in the rural areas of Manaure.

The program consists of a post-trauma follow-up that will depend on the nutritional status of the child, which is carried out by a general practitioner and a Wayúu community agent who has a complete malnutrition kit to provide health care in the community. Medical care provided to children is focused on integrated management of acute, moderate, and severe malnutrition. If further medical attention is needed, inpatient care is provided to children referred with high complexities due to comorbidities, in order to ensure priority care.

Additionally, the program promotes parents' participation in strengthening beneficiaries' food and nutritional security. To ensure children's successful recovery, parents should be involved and understand the importance of their role as caregivers and their responsibility in the care of their children's health. In addition to the nutritional guidance provided, each parent receives thread to weave purses that can then be exchanged for food packages, provided they meet the conditions of completing two purses and demonstrate that the child's weight has increased since the child's initial medical visit and an improvement in the child's personal hygiene.

Through the implementation of this program in 2019, we impacted 190 communities with 474 follow-ups provided to 107 patients, 67 of whom were treated in the El Pájaro area and 40 in the Mayapo district. Meanwhile, 253 food packages were delivered, and 49 children were included in the Paternal Stewardship project: 34 at risk of acute malnutrition and 15 with moderate or severe acute malnutrition, 46 of whom showed improvement in their nutritional status.

INTRAMURAL CARE FOR MALNUTRITION, NUTRITIONAL RECOVERY CENTER OF MANAURE



As of 2017, the Baylor Colombia operates the Nutritional Recovery Center (NRC) in Manaure, in coordination with the National Family Welfare System's institutions, in an effort to reduce malnutrition in children under 5. Intramural care is offered to children without additional pathologies to recover their nutritional state, in collaboration with an interdisciplinary team and support staff comprised of general practitioners, nutritionists, social workers, and pediatricians who are responsible for providing medical care, nutritional supplements, and for promoting nutritional and health guidance.

This approach addresses the child within various social, economic, and political contexts and allows us to provide comprehensive care that takes into account the diversity of our patients. As a fundamental axis of nutritional recovery, we refer healthy children to early childhood programs managed by the Colombian Family Welfare Institute (ICBF), where they are able to develop alongside their peers.

During 2019, the program positioned itself as a trusted provider for the treatment of malnutrition in the territory. Traditional authorities are more open to children receiving treatment within the CRN, and the interdisciplinary team has earned a reputation for making correct diagnoses. Last year they attended to 198 children: 163 Colombians and 35 Venezuelans, of whom 109 fully recovered.

2. EDUCATION, PREVENTION AND PROMOTION



TRADITIONAL MIDWIFERY AND SAFE MATERNITY BEST PRACTICES

Since 2017, the Baylor Colombia has cooperated with traditional Wayúu midwives on the Knowledge Dialogues project, an exchange between ancestral and professional knowledge. The project is part of our effort to fulfill objectives from the La Guajira Departmental Secretariat of Health for the National Training Service (SENA) and the Ministry of Health and Social Protection (MSPS) to reduce mother and child mortality and morbidity in the municipality of Riohacha.

The project was developed in four phases: planning and recruitment, the development of dialogues, monitoring and adjustments, and replication in other areas. The content of the discussions included topics related to the concept of maternal and child health, prenatal care and safe delivery, newborn care, and strategies for risk management in maternal and child health.

In addition to the SENA and the MSPS, many other experts participated, including from the Secretariat of Departmental Health of La Guajira, Malteser Colombia, Baylor-Colombia, Chevron, and the Anashiwaya Clinic. As a result of this program 2019 , 22 Wayuu Traditional Birth Attendants.

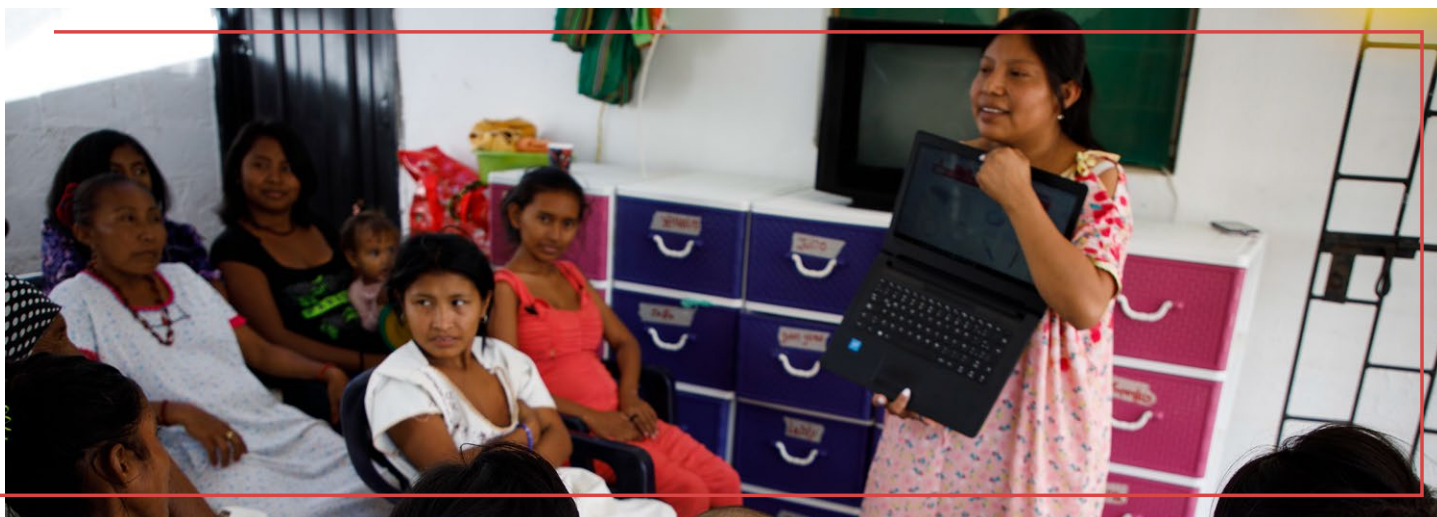


BREASTFEEDING DIALOGUE

As part of our effort to spur community participation in strengthening health practices, our knowledge exchange dialogues include education around the benefits of exclusive breastfeeding. We encourage a space for mutual learning in which the communities, through their traditional knowledge, reinforce their knowledge, ask about what they do not know, and communicate what works for their population. Through the bidirectional dialogue, the mothers interact to learn about their practices in breastfeeding and the beliefs that justify their practices, in order to reach a consensus to implement exclusive breastfeeding during the first six months of life and to reinforce care practices and healthy lifestyles.

Our program involves roundtable discussions in which we ask mothers about their experiences breastfeeding, how they do it, and our health workers learn about the positions and techniques that ensure an adequate suction for the baby and the mother. We also talk about complementary feeding.

Our team participated in four of these dialogues in 2019, which were attended by 77 pregnant and breastfeeding women, adolescents without children, and grandmothers.



DIALOGUE ON MALNUTRITION BETWEEN WESTERN AND TRADITIONAL MEDICINE

In partnership with the Armando Pabon Lopez Hospital, the United States Agency for International Development (USAID), indigenous Wayúu communities, and health professionals from Baylor Colombia, we are developing a dialogue around malnutrition in the municipality of Manaure. Our objective is to support communities in strengthening their health protection practices.

To achieve this, we focused on integrating Western and traditional medicine, understanding the Wayúu population's perceptions about malnutrition care for children under 5 years of age, learning how to manage malnutrition emergencies, and strengthening the path to comprehensive care for malnutrition cases.

This two-way dialogue creates mutual understanding between Piachis, indigenous leaders, traditional authorities, doctors and other health professionals who serve to transmit their knowledge and daily experiences in the management of malnutrition, achieving a consensus between Western and traditional medicine to implement the best route of care for the patient.

TRAINING OF HEALTH PROMOTERS

We conducted trainings to reinforce the knowledge and skills of 10 health promoters linked to the SAIL program in La Guajira, in order to ensure adequate health care and the provision of quality service.

In an effort to ensure quality in the advice provided by health promoters, we conducted 10 trainings in 2019 focused on the management of acute, moderate, and severe malnutrition; anthropometric measurements; prenatal follow-up; food handling; training in EidyHealth software; upper and lower respiratory infections; a theoretical workshop on "the golden minute" and essential care of newborns; training sessions of community researchers in the systematization of case studies and the fundamentals of qualitative and quantitative research; a workshop on IMCI clinical strategies; and the workshop on early childhood development, jointly conducted by Gymboree Colombia, the Departmental Secretary of Health, and the SENA.

VACCINATION COURSE

To improve vaccination rates in the municipality of Manaure and to develop healthcare skills among Wayúu health promoters linked to Baylor Colombia, we provided a vaccination course for 10 health promoters over the course of three months, for a total of 40 hours, at the Foundation for the Integral Development of Human Talent in Health (FUNDESALUD) in Riohacha, in conjunction with the Armando Pabón López Hospital and the Secretary of Health. As a result of this effort, the health promoters were able to apply their knowledge in practice by improving vaccination coverage in 200 indigenous communities in Manaure.

ROTATING PEDIATRIC RESIDENCE WITH THE UNIVERSITY OF ANTIOQUIA

The nutrition and primary healthcare rotation seeks to provide theoretical and practical experiences for the pediatric resident to care for children with acute malnutrition based on the application of guidelines for the comprehensive treatment of acute malnutrition and the Integrated Care Routes (RIA), in an area away from high complexity health centers.

This program is developed in partnership with the University of Antioquia and its third-year pediatric residents who provide their health services at Baylor Colombia in the community of Jieyusirra with coverage in the areas of El Pájaro and Mayapo, and in Anena'a Nutrition Recovery Center Wachon Manaure.

We help residents to understand the pathophysiological and metabolic adaptation processes in acute malnutrition, understand the Integrated Health Care Model (MIAS) with a differential approach and establish the Integrated Route of Attention of the malnourished child, and apply the guidelines for the comprehensive treatment of acute malnutrition according to Resolution 5406 of 2015 of the Ministry of Health and Social Protection. They gain the ability to assess the nutritional status of children with acute malnutrition and provide them with comprehensive care both in hospital treatment and at home. Therefore, they also perform outpatient treatments for children with acute malnutrition without complications, with emphasis on prescribing Therapeutic Formula Ready for Consumption. For inpatient cases, they treat children with moderate and severe acute malnutrition, with an emphasis on prescribing formula F-75 and micronutrient supplements.

During 2019, 11 residents performed ambulatory rotation.

INTERNAL ROTATION JAVERIANA UNIVERSITY

In 2019, we signed onto the framework for a teaching-service agreement between Baylor Colombia and the faculty of medicine at the Javeriana Universidad.

The rotation between nutrition and primary health care in La Guajira seeks to provide theoretical and practical elements for students to acquire skills and abilities for the comprehensive management of children with acute malnutrition in indigenous communities based on accepted guidelines and the Integrated Care Routes, in an area away from health centers of high complexity.

The rotations take place in the following locations in La Guajira, with an emphasis on outpatient activities developed: Mayapo Health Center, extramural follow-up to families of patients with acute malnutrition, IPS Baylor-Colombia, and Manaure Nutrition Recovery Center. Rotations began in December, with two interns arriving monthly.

REGIONAL CONGRESS OF THE COLOMBIAN SOCIETY OF PEDIATRICS

The La Guajira Region of the Colombian Society of Pediatrics met on October 17, 18 and 19, in the municipality of Riohacha, with the support of the Baylor Colombia and its founding partner Chevron Colombia, Texas Children's Hospital, BIPAI, IPS Outtajiapülee, and La Guajira Governorate, among others.

The event was designed to train personnel in the management of prevalent childhood diseases, acute malnutrition and associated comorbidities, as well as pediatric emergencies. These are the main causes of death in early childhood, and they are the biggest challenge for hospital and extramural care in the territory.

Baylor Colombia helped to organize the event and facilitated the continuing education activities of the health professionals of the department. Staff participated as lecturers and facilitators of the Pediatric Emergency course, training 35 professionals in the S.T.A.B.L.E. pediatric program and 35 in pediatric emergencies.



3. RESEARCH AND DEVELOPMENT

ASSESSMENT OF NEURODEVELOPMENT DURING RECOVERY FROM ACUTE MALNUTRITION

Acute and chronic malnutrition and micronutrient deficiency not only affect height and weight gain but can cause neurodevelopmental delays. Considering the importance of this topic, we researched neurodevelopmental deficits in patients under 5 admitted to the Manure Nutritional Recovery Center (CRN), measuring the neurodevelopmental response to extensive treatment of acute malnutrition and characterizing the relationship between a patient's neurodevelopment, the biological markers of nutritional recovery, and the objectives of sociocultural interventions.

As a result of the investigation, we learned that a significant number of children at the CRN who presented significant delays in one or more of the domains of development (physical, emotional, cognitive, or social) showed advances in neurodevelopment. In some cases they even approached age-appropriate milestones, which improved their nutrition status as they began to gain weight and were exposed to greater psychosocial stimulation.

EVALUATION OF THE EFFECTS OF ANEMIA AND NURSING IN PREGNANT WOMEN OF THE WAYÚU INDIGENOUS PEOPLE AT THE MEDICAL CENTERS IN MAYAPO AND EL PAJARO

Anemia is a condition whereby the hemoglobin count is decreased in red blood cells, which are responsible for supplying oxygen throughout the body. One of the main causes during pregnancy is iron deficiency, according to the World Health Organization (WHO), and its prevalence is 35-75% in developing countries. Because this is a global public health disease that affects the population of La Guajira, this research was conducted with the objective of verifying whether the conditions of anemia and low maternal weight have an effect on fetal growth, fetal circulation, and perinatal outcomes in the indigenous Wayúu communities.

This study focused on pregnant women in the second trimester of pregnancy with hemoglobin levels below 9.9 g / dl, normal nutritional status and body mass index for gestational age, and pregnant women without systemic pathologies or histories during a period of 24 months.



THE POTENTIAL OF EGGS TO IMPROVE THE NUTRITIONAL RECOVERY OF VULNERABLE INDIGENOUS COMMUNITIES IN THE NORTH OF COLOMBIA

In the department of La Guajira, acute malnutrition in children under 5 years of age exceeds 3.2% and chronic malnutrition is close to 28%. The Wayúú, the indigenous people who live in this region, suffer the highest mortality rate associated with malnutrition due to inadequate food intake, the cycle of malnutrition infection, poor sanitation, and limited access to medical care.

To reduce mortality associated with malnutrition we developed a project for the sustainable production of eggs in six Wayúú communities, for a period of 6 months, alongside nutritional screening activities and medical care. Medical and nutritional care included growth and development monitoring, prenatal care, immunizations, and education to all beneficiary families on healthy nutrition and eating habits.

Apart from egg product, the project also included the construction of predator-resistant chicken coops from local materials, the use of supplementary food from agricultural wastes, and holistic extension courses.

COMPREHENSIVE HEALTH CARE FOR DISPERSED POPULATIONS

It is important to build a model of health care that accounts for particular cultural, social, economic, political, and geographical contexts, and that is responsive to the health needs of the population living in La Guajira. Therefore, we developed the Comprehensive Healthcare Model (MIAS, for its initials in Spanish) following the guidelines defined by the Ministry of Health and Social Protection. To begin with, we prepared the department for the implementation of the MIAS along 10 components defined by the Ministry. This plan was designed for the department of La Guajira with the participation of the indigenous authorities territories, the community, and public- and private-sector actors.

As a result, we drafted a final technical document for the implementation of the MIAS, aimed at transforming the social determinants of health and disease in the department.

4. COMPLEMENTARY ACTIVITIES



EGG PRODUCTION FOR FOOD SECURITY IN INDIGENOUS COMMUNITIES

The sustainable egg production project was launched in 2017, in partnership with the Éxito Foundation and Fundación Ecfera. The goal is to reduce malnutrition rates through the production of chicken eggs in the indigenous communities of Las Américas, Atunalain, El Chorro, Balermana, Uriakat 1, and Uriakat 2.

The project includes three activities focused on nutritional detection, medical care, and egg production. The medical and nutritional care components include growth and development monitoring, prenatal care, immunizations, and education of all beneficiary families on healthy nutrition and eating habits. Egg production includes vaccination against Newcastle disease, the construction of predator-resistant pens from local materials, the use of supplementary food from agricultural waste, and holistic extension courses.

The communities have benefited from the construction of a pen for the breeding and care of laying hens, which have a production period of 80 weeks. The production of eggs obtained through the project is distributed among the families, which receive approximately 20 eggs per week, and the production of eggs over the weekend is marketed to guarantee income used to replace the hens when they finish their production cycle.

By 2019, 88 Wayúu families benefited directly and 100 more indirectly by the production of 34,719 eggs. The project decreased acute chronic malnutrition by 81%, reduced the risk of malnutrition by 45%, and increased 30% of the population under 5 years to an adequate weight. Additionally, there are no pregnant women underweight for their gestational age.

GENERATION ZERO: NUTRITIONAL RECOVERY AND EDUCATION PROJECT

In partnership with the Éxito Foundation, the Gen Cero (Generation Zero) project seeks to eradicate chronic malnutrition in Colombia. At the national level, it is expected that 2025 will see the first generation born with zero malnutrition, and by 2030 no child under 5 will have chronic malnutrition in the country.

This initiative focuses on helping pregnant Wayúu mothers, adolescents or older adults with low weight, and Wayúu children at risk of low weight who live in the municipality of Manaure, by guaranteeing them a healthy environment to grow, including high-quality standards of health care, nutrition, and upbringing to promote their physical, cognitive, emotional, and social development. The program also delivers food packages on a monthly basis; monitors the nutritional status of the beneficiaries; provides medical, nutritional, and pediatric care; and food and nutritional education.

By 2019, through this program we delivered 2,868 food packages benefiting more than 300 families.

ALIMERCAMBIO: INTERCHANGEABLE RECYCLABLE MATERIALS FOR FOOD AND HEALTH SERVICES

Alimercambio is a project that we have been developing with the help of Bancalimentos, Caminos de Identidad Foundation, Foment Bank of Latin America “CAF”, Éxito, and Chevron in order to implement a self-managed and sustainable triple impact model (health, economic, environmental) of food security and environmental recovery, through the use of recyclable materials to obtain food for vulnerable populations in the municipality of Manaure, La Guajira. Starting in August 21, 2019, the project began recycling in the municipality of Manaure. Then on November 8, 2019, in the Mayapo district, we continued with the opening of the rural service point.

During 2019, we collected nine tons of recyclable materials, and 1,006 people participated in the launch. We are consolidating and expanding the project further with the inauguration of an urban service point in the municipality of Manaure in early 2020.

ARTESENAL HANDCRAFTS PROJECT AT THE NUTRITIONAL RECOVERY CENTER

To improve the economic conditions of the Wayúu population and generate an alternative income, the psychosocial team at the Nutritional Recovery Center in Manaure (CRN) developed the Tejiendo Ideas project. This initiative encourages mothers and caretakers of children entering the CRN to help their families during the days in which children are in the recovery process through the production of backpacks, bracelets, and hammocks, among other things. As a result of this project the products that the mothers weave are sold, and the money obtained is given to them so that they can contribute to the economic well-being of their families.

TESTIMONIALS

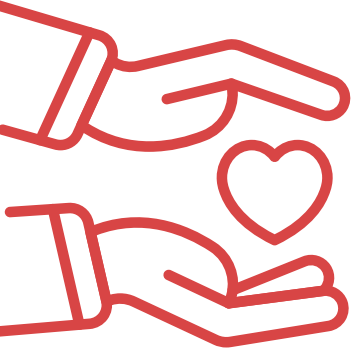
- Good morning my name is **Claudina Epinayu**, I am from the Custem ranch and with Baylor-Colombia I learned to plan not to get pregnant, that has been a great help for my family and my economy because today food is very expensive in addition to supporting a child.
- My name is **María Alejandra Ramírez**, I am a third year pediatric resident at the University of Antioquia and my experience in the pediatrics rotation that we carried out in La Guajira, thanks to an agreement with the Baylor Colombia, was very gratifying because I was able to interact with patients, get to know their families, see their environment and culture, in the development of activities at the IPS in Jieyusirra, the Nutritional Recovery Center in Manaure and the extramural consultation. It was one of the most beautiful experiences I had.
- My name is **Sara Rojas**, I am a third-year pediatric resident at the University of Antioquia. I was rotating in La Guajira with Baylor-Colombia and during this time I carried out several activities that included a medical attention presence at the Nutritional Recovery Center and IPS Baylor-Colombia, as well as field visits to the different ranches around Mayapo and Manaure. There, we recognized children who were malnourished or who were at risk of malnutrition or different health problems. We also undertook a review of the topic with Dr. Spencer and the other health professionals. These are activities according to the diseases prevalent in childhood and the main health problems found in this population. It is a rotation that greatly enriches us as health professionals in the area of Pediatrics because we do not have contact in the city with this type of problem and allows us to see what the health situation that affects these populations really is. Thank you for the opportunity.
- My name is **Sayuri Epiayu** from the community of the Americas and I have 6 children. I am grateful to the Baylor Colombia and the Éxito Foundation that have been supporting the chicken pens where the eggs are produced, because thanks to that the feeding of my children and the community in general has improved, and the surplus is marketed to buy other things. they are needed at home Thanks for the support.
- La Guajira Media y Alta have suffered historically and notably the scourge of child malnutrition, not in vain the high mortality figures for this problem, however, the Baylor Colombia, which has been a great ally of the Éxito Foundation since 2014 , has been able to conceive and implement differential intervention strategies focused on the Wayuu population, thus generating a positive impact on their maternal and child health and nutrition indicators.

The establishment of activities such as the assembly of pens for the production of eggs for consumption and commercialization, the commitment to improve the environmental conditions of its intervention territories, as well as the economy and food security of its inhabitants through the Alimercambio project, among others . The successes of the Baylor Colombia are the basis of the trust and investment that Fundación Éxito has made over the years to improve the food and nutritional situation of children and their families.

Diana María Pineda Ruiz

Lead Social Investment and Knowledge creation.
Fundación Éxito

DONATIONS AND OTHER SUPPORT



BIPAI Baylor International
Pediatric AIDS Initiative
at Texas Children's Hospital®



**Texas Children's
Hospital®**

Baylor
College of
Medicine



MinSalud
Ministerio de Salud
y Protección Social



LEXMANA®



**UNIVERSIDAD
DE ANTIOQUIA**



Universidad de
La Sabana



SERVICIO NACIONAL
DE APRENDIZAJE



UNIVERSIDAD
DE LA GUAJIRA
SHIKII EKIRAJIA
PÚLEE WAJIIRA



INTERNATIONAL
ORGANIZATION
FOR MIGRATION
THE UNITED NATIONS MIGRATION AGENCY

BAYLOR COLLEGE OF MEDICINE
CHILDREN'S FOUNDATION
COLOMBIA
2019